

The Spire

Wesley United Methodist Church and The Wesley Foundation
at the University of Illinois

1203 W. Green St., Urbana, IL 61801-2905

e-mail: info@wesleyui.org,

web page: www.wesleyui.org

Phone: (217) 344-1120 Fax: (217)-344-1830

February 22, 2012

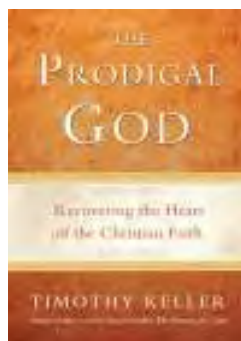
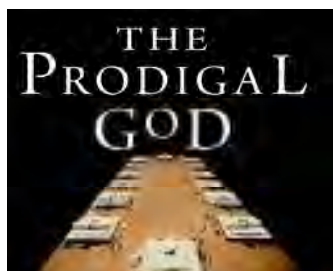
The Prodigal God Lenten Study

Examining the Parable of the Prodigal Son

Thursdays,

February 23rd—April 5th

10:30 a.m. at Wesley



Contact Pastor Miriam for
more details or to pick up
a book (\$10).

pro*di*gal - adjective

1. recklessly extravagant
2. Giving or yielding profusely; lavishly abundant
3. Having spend everything

Said of Prodigal God, "Taking his trademark intellectual approach to understanding Christianity, Timothy Keller uncovers the essential message of Jesus, locked inside his most familiar parable. Within that parable, Jesus reveals God's prodigal grace toward both the irreligious and the moralistic. This book will challenge both the devout and skeptics to see Christianity in a whole new way."

Join us for this Lenten Small Group for a
journey to rediscover the heart of the
Christian Gospel.

Come and find your place at the table!

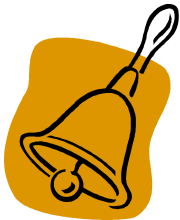
All Ages Trivia Saturday, March 3rd

5-8pm
Great Hall

It's FREE!

Come for dinner, trivia, and prizes.
Bring your own team, up to 6 people, or
just show up and join a team.

It's to your team's advantage to have a
mix of ages. Do you know how many
clues you need to solve Blue's Clues?
Or what color is Mr. Spock's blood?
Bring your random knowledge with you
for a fun evening.



Looking for a Fun and Easy Way to Get Involved in Worship Service? Join the Wesley Handbell Choir!

Rehearsals are on Monday nights in the Choir Room at 7:00 p.m., so come on down and join us for an hour of making music (no rehearsal on March 19th). If you have any questions, please contact Morgan Boes at mboes2@illinois.edu or 918-808-3743.



Blood Pressure Checks

The Parish Nurses will be giving blood pressure checks on the 2nd Sunday of the month during Coffee Hour in the Watseka Lounge and also at the back of the Sanctuary after the Contemporary Service.

Please Note: The Monday Noon Prayer Group is NO longer meeting.

The Tuesday Book Study is reading Re-Claiming the Bible for a Non-Religious World by Bishop John Spong.



Spire Deadline

Articles for the next issue of *The Spire* are due at 9:00 a.m. on **Monday, March 5th**. All articles should be submitted in writing, faxed to 344-1830 or submitted electronically to info@wesleyui.org

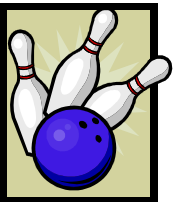


Balance Young Adult, Young Families and Friends Small Group on Sundays - New Folks Welcome!

Seeking a little balance in your life? Young adults, young families, and friends are welcome to participate in the Balance Group for study, service, and fellowship **on Sunday evenings at 5:00 p.m. in the West Lounge**. We will share a potluck meal followed by a devotion. The group will continue to meet bi-weekly. Child care will be provided. All are welcome!

Bowl for Liberia

Wesley is seeking bowlers of all skill levels to make up teams of six to bowl in a benefit for our sister conference in Liberia, West Africa, on **Saturday, February 25th, at 4:00 p.m. at Arrowhead Lanes in Champaign**. Contact Pastor Miriam if interested.



Mom's Playgroup

Join some of the Wesley Moms and their children Wednesday mornings at 10:00 a.m. in the Nursery for conversation and playtime. All ages are welcome!

World Day of Prayer

Church Women United of Champaign-United will celebrate World Day of Prayer from 9:30-11:00 am on Friday, March 2, 2012 in Robeson rooms A & B of the Champaign Public Library, 200 W. Green Street, Champaign. The World Day of Prayer 2012 celebration was written by the women of Malaysia based on the theme "Let Justice Prevail". If you could help with cookies please call Evelyn Denzin 367-0643.



Wesley Women



Upcoming UMW General Meeting and Luncheon

Women (and men) of all ages are invited to an important presentation on Wednesday, March 7th. If you can, stay to join the fellowship at a salad luncheon following at 11:15 a.m.

The speaker of the morning will be Rev. Carol Lakota Eastin, pastor at Rantoul UMC. Rev. Lakota Eastin has long been a representative for indigenous peoples of the U.S., as pastor, missionary, spokesperson and leader. She will discuss the “Act of Repentance to Indigenous Peoples” that will be presented at this year’s General Conference in April. [The church will be acknowledging its role in events such as the 1864 massacre at <http://64.38.12.138/my.asp?url=http://www.sandcreeksite.com/> Sand Creek in which soldiers killed more than 150 Cheyenne and Arapaho women, children and elders. Col. John M. Chivington, who led the massacre, was a Methodist minister.]

Join us for fellowship at 9:00 a.m. on March 7th in Wesley’s West Lounge. The program begins at 9:30 a.m. Stay for food and more fellowship. Just bring a salad to share.

[If you haven’t picked up a 2012 UMW Program Booklet, see Kristen Dean-Grossmann. Please note that there is a correction to the DATE of the October 2012 General UMW Meeting. It will be held on Wednesday October 3rd, not October 5th as listed.]



March 8th: 9:30 a.m. Knitting Ministry in the Conference Room.



March 8th: 1:30 p.m. Mary & Martha Circle in the West Lounge.

March 14th: 5:15 p.m. Wescare will meet in Room 210.



March Quilters will meet on Thursday March 15th, at 1:15 p.m. at the home of Virginia Uhlig 810 South Race Street, Urbana.

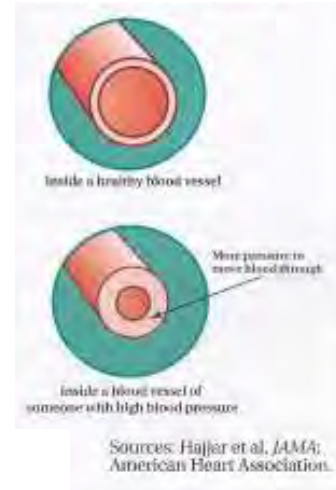
March 28th: 9:30 a.m. UMW Executive Board—Conference Room.



PARISH NURSE COLUMN

What is High Blood Pressure?

High blood pressure is a serious—and very common—health condition. It affects more than 1 out of every 4 adults. It has to do with how hard your heart has to work to pump blood through your body. When blood pressure is high, it means that your heart has to pump harder to push blood through your blood vessels. This can happen when the blood vessels have become too narrow.



How is it Measured?

When you get your blood pressure checked, your doctor will give you 2 numbers. The top number is the pressure your heart is pumping and your blood pressure is in full force. The bottom number is the pressure when your heart is relaxed between beats and your blood pressure drops.



Sources: Hajjar et al, JAMA; American Heart Association

Pat Tymchyshyn, Larrienne Jordan,
Barb Kronas, Parish Nurses



The Wesley Social Action Ministries designates Wi'am, the Palestinian Conflict Resolution Center, and our partner districts in Liberia as recipients of this year's Lenten Offering. Please give generously to support these vital outreach efforts.

Wi'am (<http://www.alaslah.org>) is supported in part by The Advance (# 14910A), the official designated giving arm of the United Methodist Church, which ensures that 100% of each gift reaches its intended mission or ministry. In their own words, "People in Palestine are living under the shadow of stress, violence, political upheaval, hopelessness, and lack of human security. The Center helps to resolve disputes within the Palestinian community by implementing the traditional Arab form of mediation, known as Sulha, as well as Western models of conflict resolution. We provide services for women and children and seek to educate the local community on human equality and basic rights. We have been involved from the ground up in workshops, seminars, and conferences that deal with civic education, women's issues, gender issues, democracy and human rights, dialogue of cultures and religions, nonviolence, reconciliation, and conflict resolution."

Some of their goals include: providing healing, hope, and restoration of relationships through mediation and counseling for community and family conflicts; providing children with trauma coping skills, crisis intervention, and summer camps; providing training for 80 beneficiaries over a span of one year, who then become trainers themselves in fields of democracy, human rights, gender equality, conflict transformation, etc; and empowering and training women in gender equality and counseling.

The Channing-Murray Foundation Will Host a Showing of the Documentary *Gasland* on Wednesday, March 7th at 7:30 p.m.

The documentary exposes current natural gas extraction processes that pose dangers to the environment and human health. State Senator Mike Frerichs and State Representative Naomi Jakobsson are championing legislation in their respective houses of the General Assembly that would ensure safe drilling and extraction practices. Members of Wesley will be joining a Faith in Place delegation in a mission trip to Springfield to lobby for this and other legislation on the Environmental Lobby Day (March 29th).

Contact Charles and Eleanor Evans for more information about this issue and how you can get involved.



The Green Team is in the process of researching ways to "green Wesley". As Christians we are morally and ethically called to be "earth keepers". "The Holy God took the human one and put him in the garden of Eden to till it and keep it". (Genesis 2:15). Our efforts combine two important

goals. One, wise use of our dwindling God given resources. Two, save money for Wesley that can be used for other worthy projects.

The Green Team needs your help because the task before us is daunting. There are those at Wesley who possess the expertise to help us look for ways to improve our use of energy and water. There are others who can educate and lead the congregation to become good stewards of the earth. Will you join us?

Call Charles Evans at 217-840-9454 or e-mail at charles.eleanor@sbcglobal.net. You will enjoy the ride!

---The Wesley Green Team (Charles Evans, Eleanor Evans, Scott Lux, Lashuna Mallett, Ray Norton, Joe Peacock, Jean Peters, Bryan Smith, and Pat Tymchshyn).

Family Ministry at Wesley

Wesley Church and Foundation strives to be a safe, loving place for all people. Thank you for welcoming all ages into worship and community. To help ensure Wesley remains a safe and loving place, the Education Ministry Team has been shaping a Safe Sanctuaries Policy to protect our children, youth, adults, and volunteers from emotional and physical abuse. A new part of this policy states that no pictures or videos will be published in print or online without written permission from a parent. Wesley Child Information forms were sent to families last week and include a Photo Release. By agreeing, this would allow us to post the Kingdom Singer's Hanging of the Greens Pageant on the website. If you have questions talk to Amy Shreve, Barb Hughes, or a member of the Education Ministry Team.

Children's Sunday School

Thanks for helping us donate over \$50 worth of items for the Center for Women in Transition! Our challenge this rotation is to memorize scripture to donate diapers to the Evening Food Pantry.

Scripture Memory

Each week you recite a new verse, you earn 10 diapers to donate to the Evening Food Pantry. If they memorize 4 of the 8 verses by April 22, they will earn a gift card to Ten Thousand Villages to choose their own reward.

Verses to Memorize

Feb 12: Acts 10:34	Feb 19: Gen 5:1
Feb 26: 1 Sam 16:7	Mar 11: Ps 130:14
Mar 18: Ps 103:11	Mar 25: 1 Cor 12:27
Apr. 15: Eph 4:29	Apr 22: Jn 15:12



Think About Summer Camp!

Check out Tree House Camp for those who love the outdoors! Sleep in a tree house, go creeking, and enjoy night hikes. Or Slumber Party Camp for GIRLS ONLY.

There are United Methodist camps across the state and for every age level. Take your grandma with you! Go to Night Owl camp! Check out the option online

at igrc.com/camping or pick up a flyer from the Children's Ministry Bulletin Board. Save money by registering by April 13th!

Want to go to camp with other families from Wesley? Talk to Amy Shreve or Virginia Uhlig about a weekend at Family Camp. Possible dates are: June 29th-July 1st, July 13th-15th, or August 3rd-5th. For some dates, children under 5 are free.



Youth Ministry at Wesley

Summer Mission Trip: July 8-14, 2012

Who: Middle School and High School.

We could still use parents and adults to come and serve alongside us.

What: We're heading to Indianapolis to serve with Fletcher Place Community Center, where we'll have the opportunity to help with community meals, the free clothing room, food pantry, summer camp, and various other projects. We'll have the opportunity to learn about issues of poverty in the inner city as well as have fun in Indy.

Cost: About \$200 per person and we plan to fund raise the majority of it. A \$25 deposit is due April 1st to Amy.

Fundraising policy: money raised during each fundraising opportunity will be split equally between the people who participated. If a youth doesn't participate in any fundraising, the cost of their trip is \$200.

Upcoming Fundraisers:

Saturday, April 7, 9 am - Pie Baking

Sunday, April 8 (Easter), Pie Sales

Sunday April 22 - Pancake Breakfast



Amy Shreve

Rejoice in the Lord always. I will say it again: Rejoice!

Philippians 4:4



wesley evening
FOOD PANTRY

Families will again receive 3 bags of groceries!

You may have read last week that the pantry will be cutting back on the amount of food we give each family. A generous donor has come forward to cover the gap in cost of giving out groceries in February at the levels we have maintained for more than two years. Without your help, however, we will likely be faced with the same decisions in March. This donor has issued a challenge to other donors --he will match all donations to the pantry between now and the end of February, up to a maximum of \$3,000. New donations of \$3,000 plus the matching \$3,000 would provide the pantry with the average cost of a month's groceries from Eastern Illinois Foodbank.



DIAPER DRIVE!!!

The Wesley Evening Food Pantry will be conducting a special Diaper Drive during February. Diapers are increasingly hard to come by and the agencies that used to make them available have had to stop distribution or limit their availability to a small amount for only their current clients. If you can pick up a package - or a case - when you are out shopping, you can help a young family conserve their funds for other necessities. All sizes are welcome. You may leave them outside the food pantry door near the east kitchen.

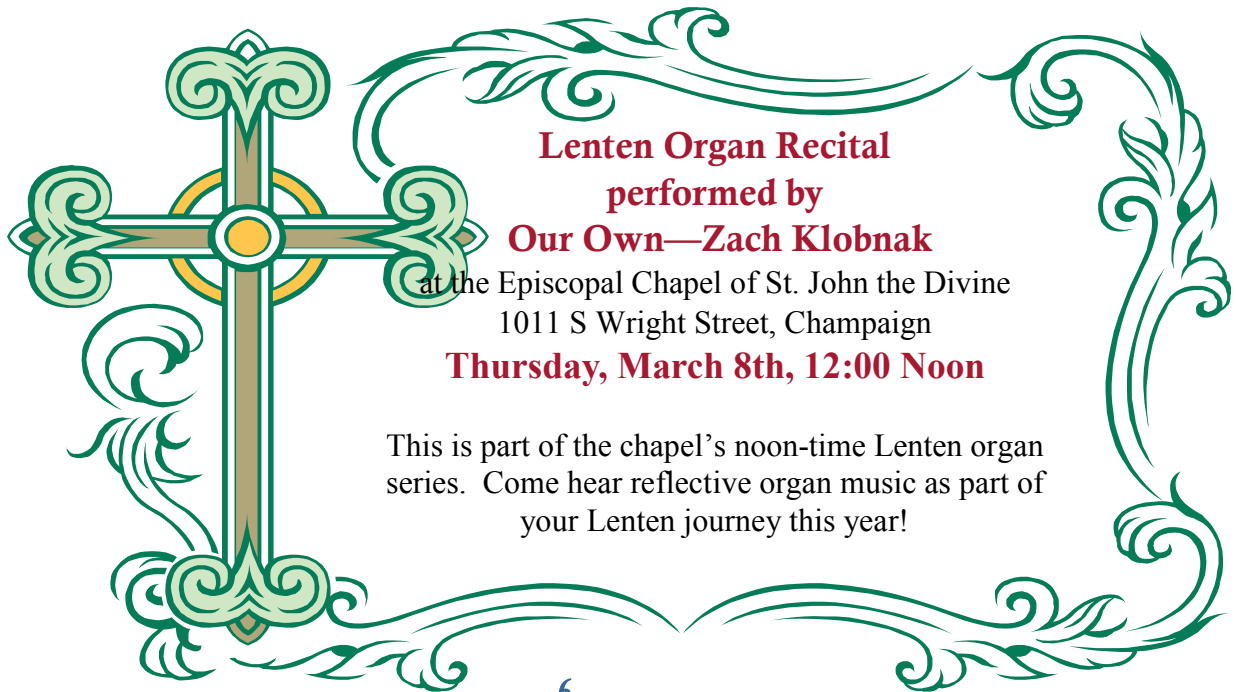
Worship Schedule
9:30 a.m. Traditional Worship
9:30 a.m. Church School
10:30 a.m. Coffee/Punch Hour
11:15 a.m. Contemporary Worship
11:00 a.m. One Room Church School

Wesley Staff

Rev. Dan King Crede.....	Senior Pastor/Director
Rev. Rob Kirby.....	Campus Minister
Rev. Miriam Snider.....	Associate Minister
Brian Sullivan.....	Director of Contemporary Worship & Music
Amy Shreve.....	Director of Christian Education & Youth
Zachary Klobnak.....	Organist
Dr. Barrington Coleman.....	Director of Choral Music
Morgan Boes.....	Bell Choir Director
Dolly Hsu.....	Kingdom Singers Director
Barb Kronas.....	Spiritual Caregiver
Michelle Ingram.....	Business Administrator
Rebekah Rauschenberger.....	Ministry Secretary
Donna Giffen.....	Administrative Secretary
Wayne Wilson.....	Aide for Development
Donna Camp.....	Director of Community Services
Chris Livesay.....	Custodian
Michael Glenn.....	Custodian
Ron McClellan.....	Maintenance
Justin & Megan Farkas.....	Weekend Custodian

Volunteer Staff

Don Houts & Joe Peacock.....	Assisting Pastors
Pat Tymchyshyn, Larrienne Jordan, Barb Kronas.....	Parish Nurses



Lenten Organ Recital
performed by
Our Own—Zach Klobnak
 at the Episcopal Chapel of St. John the Divine
 1011 S Wright Street, Champaign
Thursday, March 8th, 12:00 Noon

This is part of the chapel's noon-time Lenten organ series. Come hear reflective organ music as part of your Lenten journey this year!



empty tomb® , inc.

MEGA WORK-A-THON FUNDRAISING EVENT

Saturday, March 3, 2012

8:00 a.m. - Noon

Everybody Wins!

- Christians serve in oneness to help others in Jesus' name.
- Local children have a place to store their clothes.
- empty tomb, inc. is able to have funds to serve those in need.

Are you ready to serve?

Recruit hourly sponsors for your work the day of the event:
Help us construct and deliver clothes cupboards for children.

Sponsor someone to work:

Pledge a gift per hour. (Gifts to empty tomb are tax-deductible.)

Register Today!

Contact your church or go to:

www.emptytomb.org and click on Register Now.

THE LIVING WELL COURSES SPRING 2012

All Taught by Tom Neuffer Emswiler

MINI-RETREAT: (sponsored by 1st United Methodist Church, Champaign)

LAUGH LOUDER, LIVE LONGER--
THE HEALING POWER OF HUMOR AND
LAUGHTER

Saturday, February 18:

First United Methodist Church, Friendship
Center, 210 West Church St., Champaign, IL.

Schedule: 9:30 a.m.- Continental Breakfast
10:00 a.m. - Noon --Program

THE GENERAL PUBLIC IS INVITED.

COST \$5 per person (includes breakfast).

ADVANCED REGISTRATION IS REQUIRED. Register by calling the church office at 356-9078 no later than Feb. 15. Registration fee may be paid at the retreat.

LEADER: I will be the leader for this morning retreat. It will be a greatly shortened version of the humor class I have taught a couple of times at OLLI (Osher Lifelong Learning Institute at the U of I) and also in other settings. This is a grand opportunity to join together with folks from First United Methodist Church for a time of great fun and laughter and learning.



COURSES FOR THE SPRING

COURSE ONE: *Mystical Dogs--Animals as Guides to Our Inner Life*
This is a follow-up to the "Animals as Spiritual Guides" class I taught at OLLI last year. We will be learning the eight stages of the mythical path as outlined by Evelyn Underhill in her book *Mysticism* and as illuminated beautifully by Jean Houston in her book *Mystical Dogs*. Houston helps us understand each stage by telling us wondrous stories about her own dogs. We will not only learn from these stories but also from short videos about various animals. You do not need to have taken the first course, to take this second one. It is also not essential that you read Houston's book to take the class but I encourage you to do so if you can. The hardback sells for \$19.95 but I have located several copies (both new and used) at much more reasonable prices. I will make these available on a first come, first served basis (see the registration form on the back).



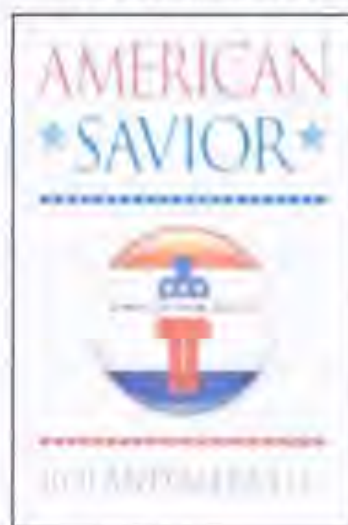
Course 1a will be offered Feb. 21- Mar. 13 TUESDAYS from 1:30-3 p.m. at Grace United Methodist Ch., 2004 S. Philo Rd. in Urbana. (limit 16) Course 1b will be offered Feb. 22-Mar. 14 WEDNESDAYS from 7-8:30 p.m. at my home 4402 Doverbrook Dr., Champaign. (limit 8)

ANIMALS MINI-FILM FESTIVAL: Mar. 9--6:30 p.m. to 11 p.m. at my home. A chance to view and talk about two great features plus a few shorts. I plan to show *Whaledreamers*, a Julian Lennon production and winner of 8 International Film Awards and *Hachi--A Dog's Tale* starring Richard Gere and Joan Allen. Cost is \$12 per person and this includes refreshments and handouts on the films. Limit is 8 so register early.

Course Two: *American Savior--a Novel of Divine Politics.*

I read the most incredible book recently. Jesus Christ has come back and he is running for President of the U.S. This book taught me more about religion than most religion books and more about politics than any book I've read on politics. And it did all this while weaving a tale that was both exciting and at times funny. I knew where the author was heading in this story, but I got a bunch of delightful surprises along the way. This is the perfect book to read in the midst of all our religious and political craziness.

In this two session course we will discuss the major themes of this book and how they relate to the politics and religion we have buzzing all around us. You will need to read the novel before the first class. Retail price for this hardback book is \$24.95 but I was able to locate 8 brand new copies which I can sell for just \$5 each. This class will be limited to 8 persons and will meet on Wednesdays, April 4 & 11 from 7-8:30 p.m. at my home, 4402 Doverbrook Dr., Champaign. Cost for this course is \$12.



POLITICS AND RELIGION MINI FILM FESTIVAL: Friday, April 13 at my home. Here is a chance for us to view several shorts plus at least one feature dealing with politics and religion. We'll look at some of the most hilarious examples of political humor(from John Stewart and Stephen Colbert), probably at least one example from a TV show (probably *West Wing*) and then the delightful feature *Dave* starring Kevin Kline and Sigourney Weaver (definitely worth seeing again even if you have already seen it). We'll have great fun as we learn from the films and each other. Cost is \$12 per person and includes refreshments plus handouts on the films (limit 8 people).

REGISTRATION FORM

NAME _____

ADDRESS _____

PHONE _____

EMAIL _____

Course 1a ___ Course 1b ___ Course 2 ___ Mini Film Festival *Animals* ___ Mini Film Festival *Politics & Religion* ___

Course 1 Cost: \$25 per person or \$40 for 2 persons registering as a couple. Includes handouts. Course 2 Cost \$12 per person or \$20 for 2 persons registering as a couple. Mini Film Festivals are each \$12 per person or \$20 for 2 persons registering as a couple. 10% discount for those registering for more than one course. Full or partial scholarships are available.

Reserve a copy of *Mystical Dogs* ___ new or like new (\$6) ___ Used (\$5)

Copy of *American Savior* new (\$5) ___

Send registration and check made out to THE LIVING WELL to Tom Neuffer Emswiler, 4402 Doverbrook Dr., Champaign, IL 61822. Contact me at 352-9906 or tnemswiler@mac.com if you have questions.